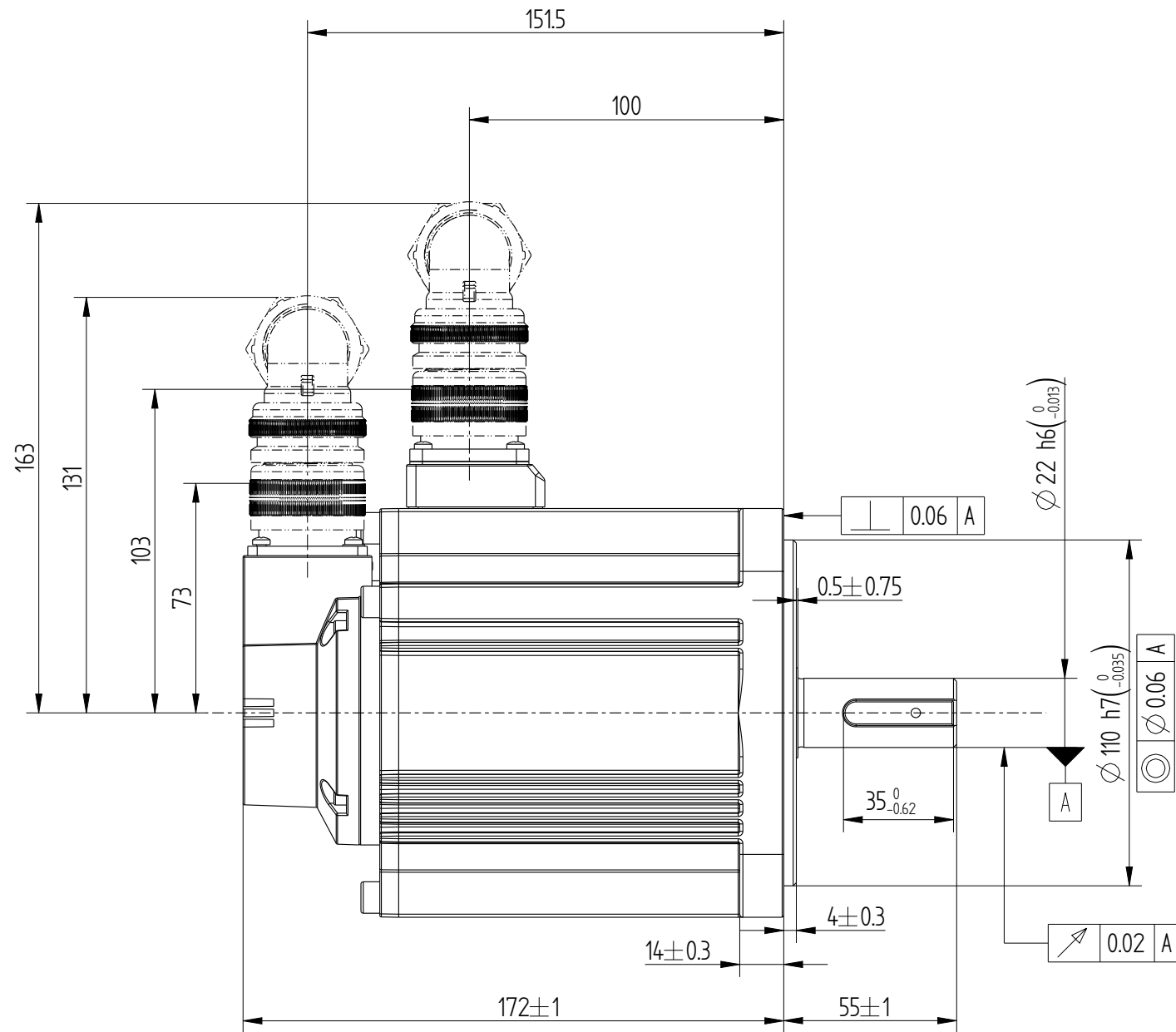
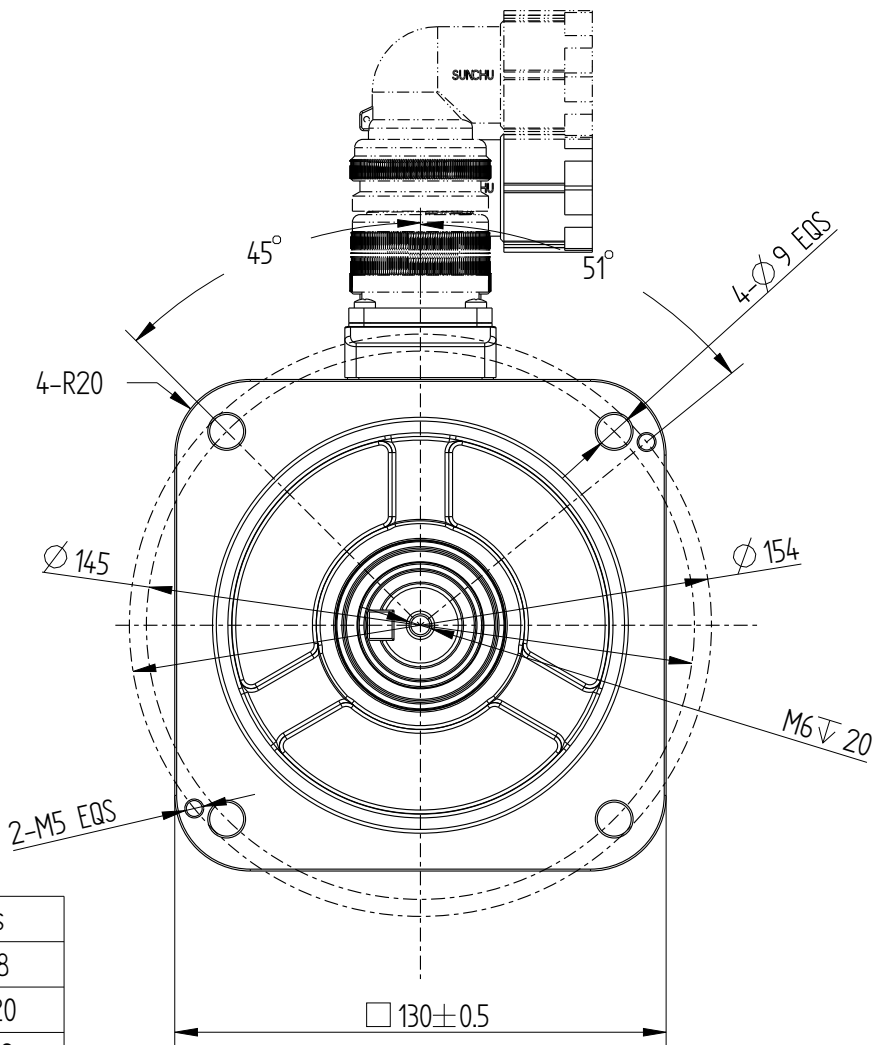
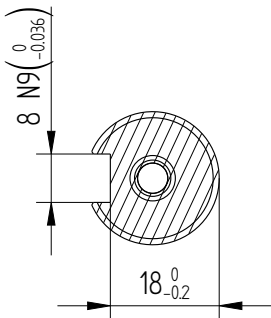
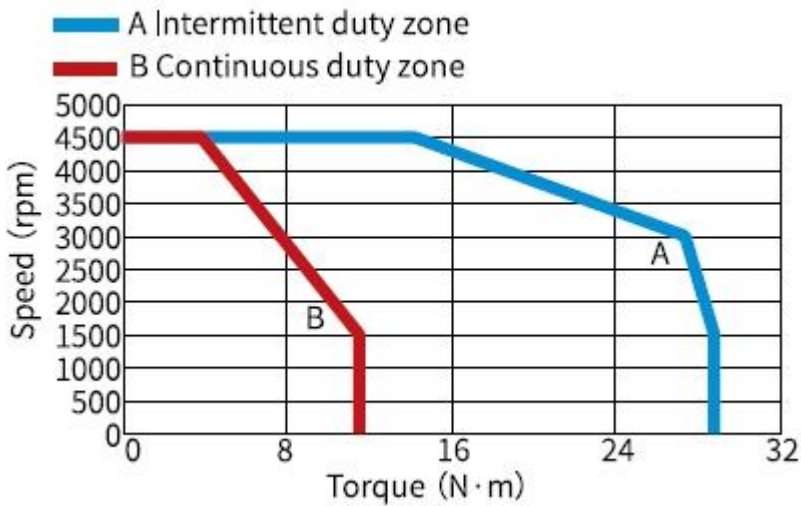


Amendment	Description

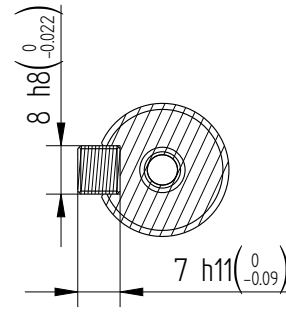
Unit: Millimeter (mm)



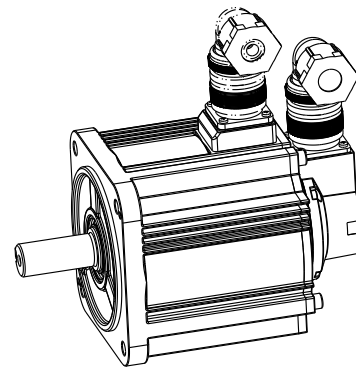
Basic function patmeters	
Rated power kW	1.8
Rated voltage V	220
Rated current A	11.9
Peak current at rated speed A	32.2
Rated torque Nm	11.5
Peak torque at rated speed Nm	28.75
Rated speed rpm	1500
Max speed rpm	4500
Rotor inertia kg · cm ²	24.9±10%
Encoder resolution	23bit
Insulation class	F(155)
Protection level	IP67
Static torque of brake Nm	/
Brake power supply V	/
Brake backlash°	/
Duty cycle	S1
Radial load N	≤686
Axial load N	≤196

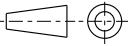


Dimension of shaft end



Dimension of shaft end with key



				Motor Outline Drawing			01117999-WX	
B02	Replace	/	/	/			<div>Mark</div> <div> INOVANCE</div>	
Version	Change method	Changed by	Date					
Design	/							
Check	/							
Craft	/							
Verify	/			Weight	Scale	Version	Page 1 of 1	
stangardization	/			8.5kg	12	B02	Model	MS1H3-18C15CB-A331R-INT
Approve	/							